



JUMPSTART YOUR CAREER WITH THE NACE CAREER READINESS REPORT!

 Suitable



Preparing for life after graduation can feel overwhelming, but you don't have to guess how "career-ready" you are. Through a partnership between NACE (National Association of Colleges and Employers) and Suitable, you have access to a next-generation platform designed to help you track, measure, and showcase your professional skills.



What is the NACE Career Readiness Assessment?

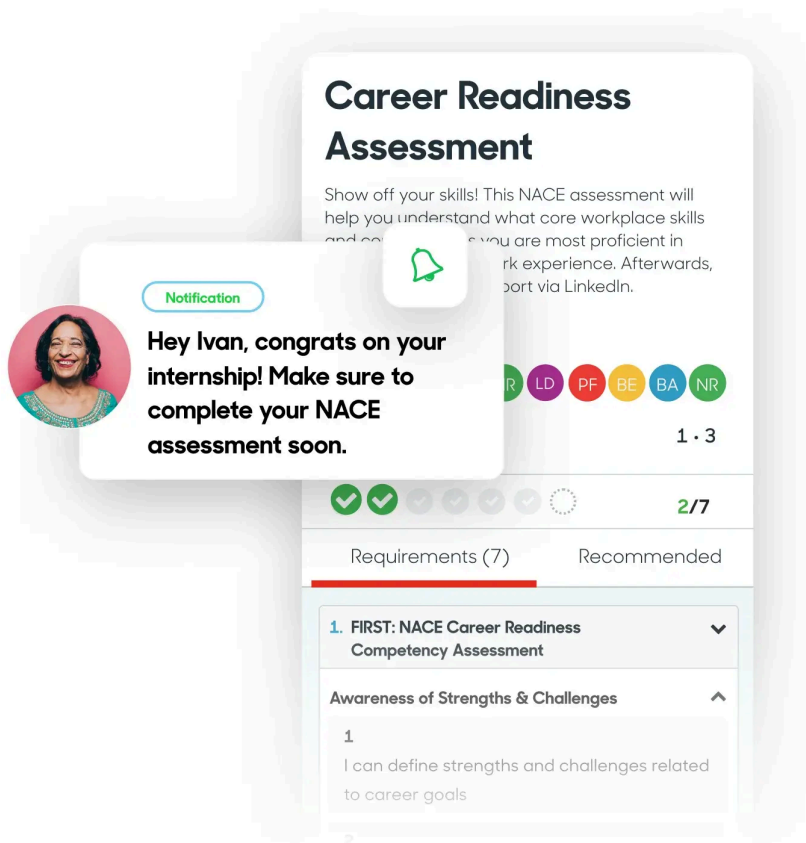
It is a modern, mobile-friendly platform that evaluates your strengths across the 8 core NACE competencies—the exact skills employers look for most when hiring college graduates.

Following an internship, co-op, on-campus job, or other experiential learning experience, you will use this tool to bridge your learning gaps, receive evaluation and feedback from your Observer, and ensure a successful transition from college to the workplace.

How it Works: 4 Simple Steps



- 1 Complete an internship, co-op, on-campus job, or other experiential learning activity.
- 2 Answer questions about your experiences and rate your proficiency across various professional behaviors.
- 3 Your supervisor (aka "Observer") rates your performance, giving you real-world insight into your professional strengths.
- 4 Access your comprehensive Career Readiness Level score (out of 4.0), view comments/feedback, and see your national percentile ranking.



NACE Career Readiness Assessment How-Tos

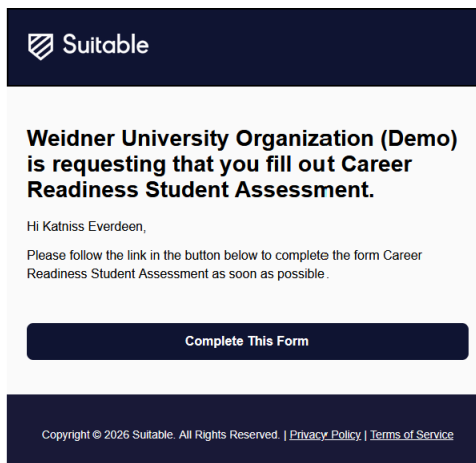


Taking the Assessment

You will be taking the Career Readiness Student Assessment one of two ways, outlined below.

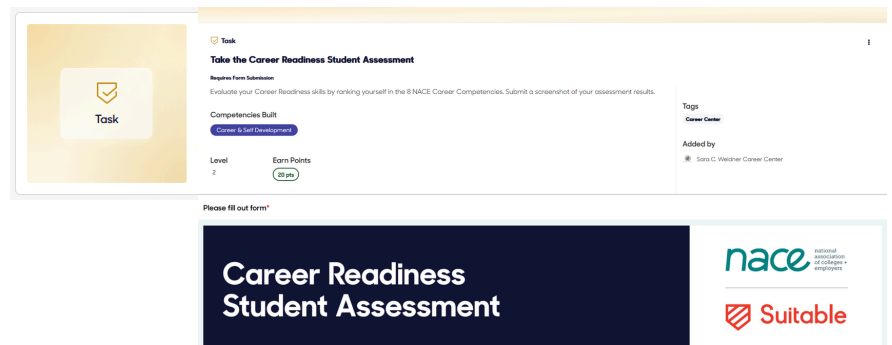
Via Direct Link

1. You will be invited to take the assessment by an advisor, faculty, or staff member at your school.
2. You will receive the invite in your email.
3. Click the hyperlink to begin taking the assessment.



Embedded Within an Activity

1. Your school/program administrator will create an activity in Suitable with the Career Readiness Student Assessment embedded in it.
2. They will direct you where to find the activity (it might be included in an Achievement (Badge) or as part of a class).
3. Take the assessment directly in Suitable, complete the activity, and claim your points!



Finding Your Career Readiness Report

After you and your Observer take the assessment, you can view your results and their feedback in your Career Readiness Report!

***NOTE* The Report is viewable on the web only (not mobile)!**



Click "Forms" on the left-hand side of your screen.



By default it will show "All Forms." Click "My Responses." You should see your submitted assessment in the list.



Click the three vertical dots on the right side of the assessment. Then, click "View Career Readiness Report."

